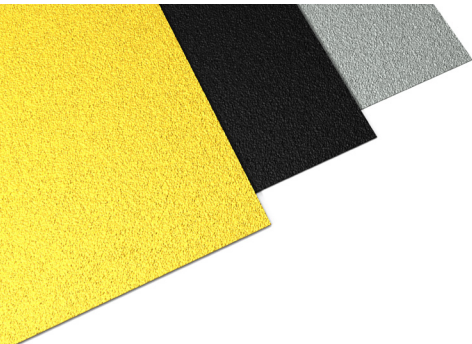



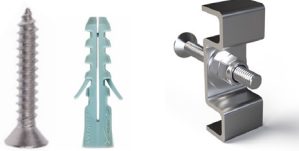


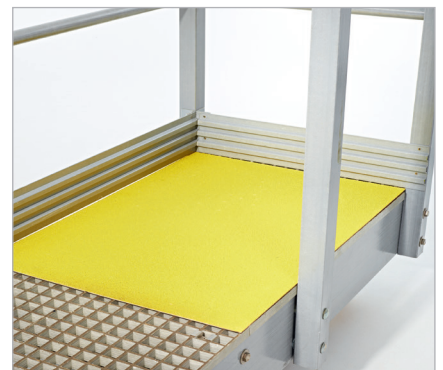
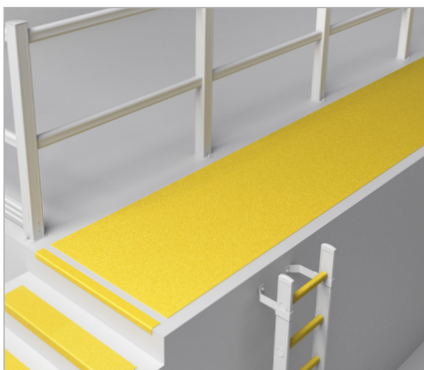
XTRA GRIP BOPLAN SHEETS SPECIFICATION SHEET

Revision: 11 October 2021 4:22 PM
Boplan reference: AS ...



PRODUCT SPECIFICATIONS

APPLICATION		
	Reduce skidding hazard in slippery and wet environments. Suited for pedestrians. Indoor and outdoor use. Durable and long lasting.	
MATERIAL		
Top layer	Aluminium oxide granules	
Backside	Glass fiber (30%) composite	
STANDARD COLORS		
	Yellow, Black, Grey	
FIXATIONS		
	Adhesive Fixation	Mechanical fixation
Pretreatment	Both surfaces need to be clean and dry, degreased and free from any loose debris or flaking from previous coatings.	No needed
Advised environment	Clean concrete floors Checker plate floors Steel plate floors	Damp or oil soaked floors Wooden floors Metal grid floors
Type	Polymer glue - PB MS600 - 290ml	M-clip with bolt (Inox) Mechanical fixing floor (Inox)
Installation instruction (see also installation sheet)	Use a mastic gun Use 1 tube (290ml) /1.875 m ² Curing time: 6 hours	6 fixings per m ²
References	 FPG600-0290-BL (Black) FPG600-0290-GR (Grey)	 ASFI06-0050-PLUG (Ø6mmx50mm) Screw and plug ASFI06-0050-M-CL (M6 x 50 mm) ASFI06-0080-M-CL (M6 x 80 mm)





FEATURES AND FUNCTIONALITY - EXTRA GRIP

SIZE AND PHYSICAL PROPERTIES

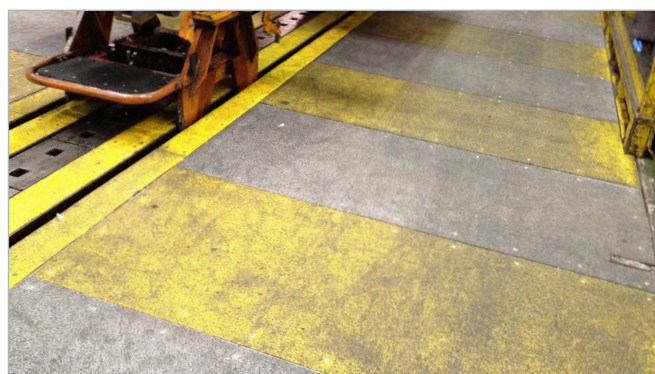
Standard flat sheets	Size Thickness Weight	1220 mm x 3000 mm 4.0 mm thick 8.5 kg/m ²
Low profile sheets	Size Thickness Weight	1220 mm x 3000 mm 1.5 mm thick 3.5 kg/m ²
Low profile cleats tiles	Size Thickness Weight	600 mm x 150 mm 1.5 mm thick 3.8 kg/pcs
Surface roughness	R-Value: R11 Pendulum test value: 45	DIN 51130: 2004 BS EN 13036-4: 2011
Hardness	Mohs scale: 9,5 Barcol hardness: 40 min Knoop scale: 2200	Mohs scale of mineral hardness ASTM D 2583 Knoop hardness test
Exposure to sunlight	UV resistant	
Fire resistance	Min. Class 3	BS476 part 7

CHEMICAL RESISTANCE

Salt environment	Continuous exposure
Wet environment	Continuous exposure
Petroleum	Limited exposure
Strong acids	Not recommended (Sulphuric Acid, Hydrochloric Acid, Nitric Acid)
Alkali	Not recommended (Sodium Hydroxide, Potassium Hydroxide)
Solvents	Not recommended (Acetone 100%, Ethyl Acetate 100%)
Alcohols	Not recommended (Methanol, Phenol)
Chlorinated Solvents	Not recommended (Methylene Chloride, Chloroform)
Benzene	Not recommended
For further information about chemical resistance contact your local sales team	


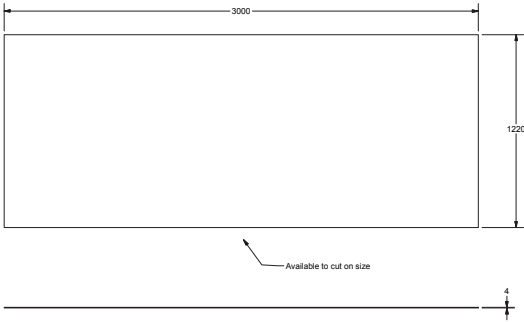

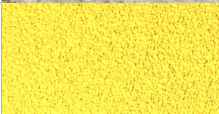

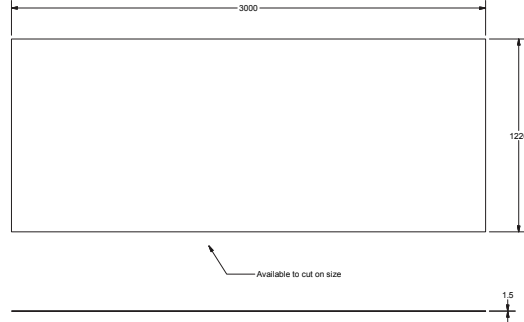



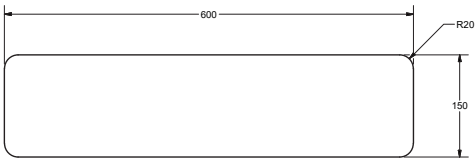


REQUIREMENTS

Type of floors	Concrete, checker plates, steel plates. Wood, Damp or oil soaked, Metal grid
Operational temperature	-20°C up to +55°C
During installation	Installers should wear resistant hand protection due to the rough surface.
When cutting or machining	Dust extraction and ventilation should be provided.





REFERENCE LIST - EXTRA GRIP - SHEETS

STANDARD FLAT SHEETS - 4 mm			
Std flat sheet 3000x1220x4mm - 3.6m ² BLACK	ASSTD-3000-1220BL		
Std flat sheet 3000x1220x4mm - 3.6m ² GREY	ASSTD-3000-1220GR		
Std flat sheet 3000x1220x4mm - 3.6m ² YELLOW	ASSTD-3000-1220YE		
LOW PROFILE FLAT SHEETS - 1.5 mm			
Low profile sheet 3000x1220x1.5mm - 3.6m ² BLACK	ASLPO-3000-1220BL		
Low profile sheet 3000x1220x1.5mm - 3.6m ² GREY	ASLPO-3000-1220GR		
Low profile sheet 3000x1220x1.5mm - 3.6m ² YELLOW	ASLPO-3000-1220YE		
LOW PROFILE CLEATS TILES			
Low profile Cleats Tiles 600x150x1.5mm BLACK Set of 12 pcs	ASCLP-0600-0150BL		
Low profile Cleats Tiles 600x150x1.5mm YELLOW Set of 12 pcs	ASCLP-0600-0150YE		
Low profile Cleats Tiles 600x150x1.5mm BLACK per piece	ASCLP-0601-0150BL		
Low profile Cleats Tiles 600x150x1.5mm YELLOW per piece	ASCLP-0601-0150YE	