

PL HEXA BOPLAN HEXA HEAVY DUTY SPECIFICATION SHEET

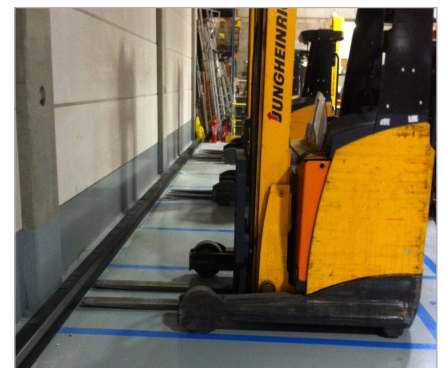
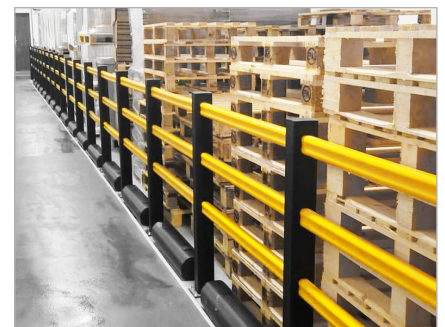
Revision: 10 August 2021 4:07 PM
Boplan reference: PL1500 ...



PRODUCT SPECIFICATIONS	
APPLICATION	
Environment	Wall protection Below a Boplan traffic barrier system Wheel stoppers / Wheel guides Indoor and outdoor use
MATERIAL	
Plinth	Polyolefin - UV resistant - Fire class E [®] - Non conductive - Impervious to most chemicals**
Endcap	SEBS rubber
STANDARD COLORS	
Plinth	Yellow - Black

[®]Classification according to EN 13501-1:2007 +A1:2009 - Fire classification of construction products and building elements.
^{**}Ask your local sales office for resistance to specific chemicals.

		FIXATIONS	
		ZC (Zinc coated)	SS (Stainless steel)
STANDARD	Wedge anchor	M16 x 140mm	Not available
	Anchor rod (Chemical)	M16 x 120mm + Chemical resin	Not available
ALTERNATIVES	Concrete screw	Ø17mm x 135mm	Not available
	Asphalt anchor	Bolt M16 x 100mm + Screw Ø22mm	Not available



FEATURES AND FUNCTIONALITY PL HEXA HEAVY DUTY

SIZE	
Height	150 mm
Profile section	H 150 mm x W 190 mm (15 mm thick)
Standard rail length	1000 mm - 2000 mm - 3000 mm (other sizes: 500 mm - 4000 mm)

REQUIREMENTS	
Concrete quality	minimum C25/30
Concrete floor plate thickness (mm)	minimum 150
Operational temperature	-10°C up to +40°
Water and humidity	Zinc coated fixations: indoor and outdoor use in most environments

IMPACT LABEL FOR SAFETY BARRIERS

BOPLAN PL HEXA

IMPACT RATING	45°	90° <small>PAS 13:2017 compliant</small>
	E80	< 80 kJ
E60	< 60 kJ	
E50	< 50 kJ	
E40	< 40 kJ	
E35	< 35 kJ	
E30	< 30 kJ	
E25	< 25 kJ	
E20	< 20 kJ	
E15	< 15 kJ	10,3 kJ
E10	< 10 kJ	7,3 kJ
E5	< 5,0 kJ	
E2	< 2,5 kJ	

TEST CONDITIONS

TEMPERATURE: 20°C
IMPACT HEIGHT: 65 mm
IMPACT ANGLE: 90°
TEST FLOOR: CONCRETE C25/30 - 160 mm
MANUFACTURER ANCHOR PULL OUT: 7,9 kN

TEST VEHICLE

WEIGHT: 2300 KG
TYPE: COMMERCIAL FORK LIFT
SIZE (L x W x H): 1890 x 1020 x 1970 mm
CONTACT AREA: STEEL BUMPER WIDTH: 600 mm

BOPLAN TEST LAB

Muizelstraat 12
8560 Moorsele
Belgium

SUCCESS CRITERIA VEHICLE STOPPED - ASI (ACCELERATION SEVERITY INDEX) < 0.5

	REFERENCE LIST PL HEXA HEAVY DUTY	
	YELLOW	BLACK
500mm (2fix)	PL1500-0500-0001YE	PL1500-0500-0001BL
1000mm (2fix)	PL1500-1000-0001YE	PL1500-1000-0001BL
2000mm (3fix)	PL1500-2000-0001YE	PL1500-2000-0001BL
3000mm (4fix)	PL1500-3000-0001YE	PL1500-3000-0001BL
501-1300mm (2fix)	PL1500-1300-0001YE	PL1500-1300-0001BL
1301-2200mm (3fix)	PL1500-2200-0001YE	PL1500-2200-0001BL
2201-3100mm (4fix)	PL1500-3100-0001YE	PL1500-3100-0001BL
3101-4000mm (5fix)	PL1500-4000-0001YE	PL1500-4000-0001BL

