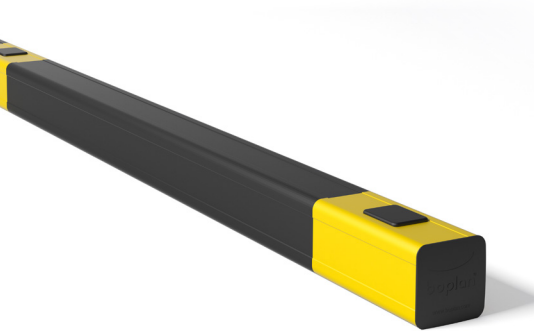




KERB BOPLAN PLINTH SPECIFICATION SHEET



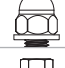
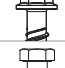
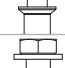

Revision: 10 August 2021 4:06 PM
Boplan reference: PL112...



PRODUCT SPECIFICATIONS

APPLICATION	
Environment	Wall protection / Wheel guide Continuous setups Indoor and outdoor use
Impact performance at 90° (in Joule)	Post: 2200 Joule (Eq. to 2,5 ton - 4,7 km/h)
	Rail: 2400 Joule (Eq. to 2,5 ton - 5,0 km/h)
MATERIAL	
Plinth	Polyolefin - UV resistant - Fire class E ⁺ - Non conductive - Impervious to most chemicals**
STANDARD COLORS	
Plinth	Yellow - Black

*Classification according to EN 13501-1:2007 +A1:2009 - Fire classification of construction products and building elements.
**Ask your local sales office for resistance to specific chemicals.

		FIXATIONS	
		ZC (Zinc coated)	SS (Stainless steel)
STANDARD	Wedge anchor	 M12 x 120mm	Not available
	Wedge anchor Countersunk	 Not available	Not available
	Anchor rod (Chemical)	 M12 x 120mm + Chemical resin	Not available
ALTERNATIVES	Concrete screw	 Ø12mm x 100mm	Not available
	Asphalt anchor	 Bolt M10 x 40mm + Screw Ø16mm	Not available
	Spit anchor	 Bolt M12 x 100mm + Plug Ø20mm	Not available

