

GOAL POST 250 BOPLAN FLEX IMPACT SPECIFICATION SHEET

Revision: 11 October 2021 11:50 AM

Boplan reference: GP...



PRODUCT SPECIFICATIONS

APPLICATION

Protection	Cost effective solution for the protection of gates, canopies and bridges from collisions with high vehicles, such as elevated work platforms, trucks and buses.
------------	--

Impact performance at 90° (in JOULE)	POST: 7200 Joule (Eq. to 5,0 ton - 6,1 km/h)
--------------------------------------	--

MATERIAL

Posts and rails	Polyolefin - UV resistant - Fire class E ⁺ - Non conductive - Impervious to most chemicals ^{**}
-----------------	---

Caps	SEBS Rubber
------	-------------

STANDARD COLORS

Posts	Yellow
-------	--------

Top rail	Yellow
----------	--------






BASEPLATES

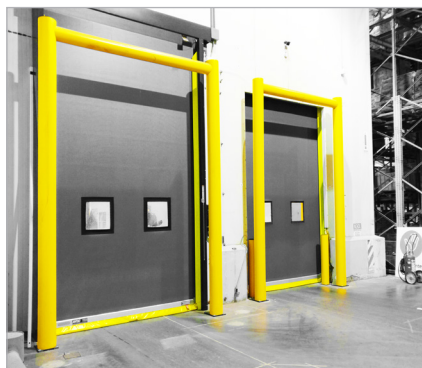
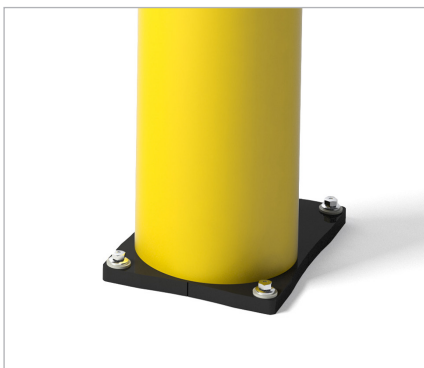
	Zinc Coated Steel	Stainless steel
Material	Steel 37	SS 304
Coating	Lacquered + electro plating	No lacquer / No coating
Color	Matt black	Natural color

*Classification according to EN 13501-1:2007 +A1:2009 - Fire classification of construction products and building elements.

**Ask your local sales office for resistance to specific chemicals.

FIXATIONS

		ZC (Zinc coated)	SS (Stainless steel)
STANDARD	Wedge anchor	 Ø20mm (M12) x 120mm	Ø20mm (M12) x 120mm
	Countersunk anchor	 Not available	Not available
ALTERNATIVES	Anchor rod (Chemical)	 M16 x 120mm + Chemical resin	M16 x 120mm + Chemical resin
	Concrete screw	 Ø17mm x 135mm	Not available
	Asphalt anchor	 Bolt M16 x 100mm + Screw Ø22mm	Not available



FEATURES AND FUNCTIONALITY - GOAL POST 250

SIZE	
Inner Height	min. 2000 - max. 6000 mm
Inner Width	min. 1800 - max. 6000 mm
Vertical frame post	Outer tube: Ø250 mm (11 mm thick) Inner profile: 112 mm x 112 mm (10 mm thick)
Horizontal top rail	Ø200 mm (11 mm thick)
Touch barrier (optional)	Ø125 mm (10 mm thick)
Baseplate	275 mm x 375 mm (20 mm thick)

REQUIREMENTS	
Concrete quality	minimum C25/30
Concrete floor plate thickness (mm)	minimum 150 mm
Concrete slab dimension around posts (mm)	1000 (h) x 1000 (w) x 600 (d)
Operational temperature	-10°C up to +40°C
Water and humidity	Steel (standard): dry indoor use only. Zinc coated: outdoor use in most environments. Stainless Steel: outdoor use or frequent exposure to water and humidity.
When higher than 4 meters	(wall) support needed
When wider than 4 meters	(wall) support needed

IMPACT LABEL FOR SAFETY BARRIERS

BOPLAN GP250

IMPACT RATING	IMPACT ENERGY	
	45°	90° <small>PAS 13:2017 compliant</small>
E80	< 80 kJ	
E60	< 60 kJ	
E50	< 50 kJ	
E40	< 40 kJ	
E35	< 35 kJ	
E30	< 30 kJ	
E25	< 25 kJ	
E20	< 20 kJ	
E15	< 15 kJ	10 kJ
E10	< 10 kJ	7,2 kJ
E5	< 5,0 kJ	
E2	< 2,5 kJ	

TEST CONDITIONS

TEMPERATURE: 20°C
IMPACT HEIGHT: 300 mm
IMPACT ANGLE: 90°
TEST FLOOR: CONCRETE C25/30 - 160 mm
MANUFACTURER ANCHOR PULL OUT: 17 kN

TEST VEHICLE

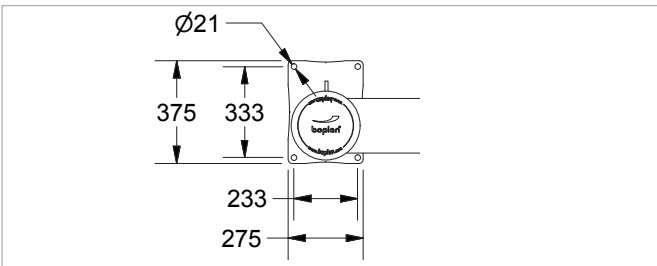
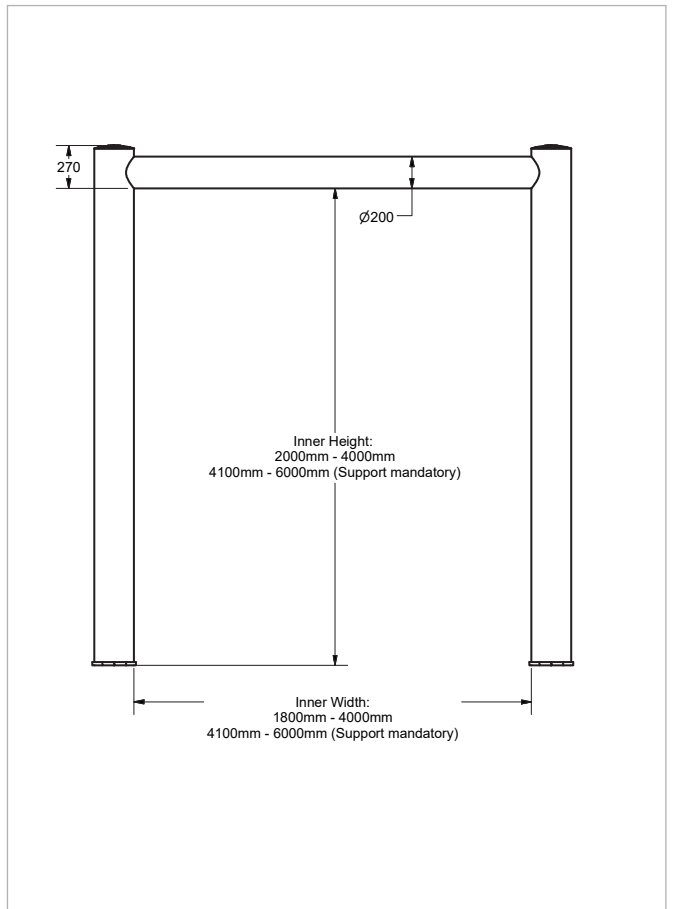
WEIGHT: 2300 KG
TYPE: COMMERCIAL FORK LIFT
SIZE (L x W x H): 1890 x 1020 x 1970 mm
CONTACT AREA: STEEL BUMPER WIDTH: 600 mm

BOPLAN TEST LAB

Muizelstraat 12
8560 Moorsele
Belgium

PRODUCT TESTED

SUCCESS CRITERIA VEHICLE STOPPED - ASI (ACCELERATION SEVERITY INDEX) < 0.5



REFERENCE LIST - GOAL POST 250



POSTS	
Bollard post - 2000-3000mm SS Bollard post - 2000-3000mm ZC	GP2501-3000-S200YES GP2501-3000-S200YEZ
Bollard post - 3100-4000mm SS Bollard post - 3100-4000mm ZC	GP2501-4000-S200YES GP2501-4000-S200YEZ
Bollard post - 4100-6000 (support R88) SS Bollard post - 4100-6000 (support R88) ZC (support NOT included)	GP2501-6000-S88YES GP2501-6000-S88YEZ
Bollard post - 4100-6000 (support Metal 80) SS Bollard post - 4100-6000 (support Metal 80) ZC (support NOT included)	GP2501-6000-S80YES GP2501-6000-S80YEZ

TOP RAIL	
Top rail - 1800-2500mm	GP2501-2500-TR00YE
Top rail - 2600-4000mm	GP2501-4000-TR00YE
Top rail - L 4100-6000mm (support needed)	GP2501-6000-TR00YE
Top rail - L 4100-6000mm Reinforced (no support needed)	GP2501-6000-TRRBYE
TOUCH BARRIER	
Touch barrier - 1800-2500mm	GP1251-2500-TB00YE
Touch barrier - 2600-4000mm	GP1251-4000-TB00YE
Touch barrier - 4100-6000mm	GP1251-6000-TB00YE

SUPPORT			
Wall connection plastic system Yellow	GP88-0200-0800-WCYE GP88-0300-0700-WCYE GP88-0400-0600-WCYE GP88-0500-0500-WCYE GP88-0600-0400-WCYE	<p>Dimensions: 200 x !250-800mm! 300 x !250-700mm! 400 x !250-600mm! 500 x !250-500mm! 600 x !250-400mm!</p>	
Wall connection metal click system Elbow - 500x500mm Black	GP0080-0500-0500BL		
Wall connection - for top rail metal with chain	GP0099-0002-WCP0BL	<p>Remark: Position of the chain can be moved.</p>	<p>DETAIL A SCALE 1/25</p>

