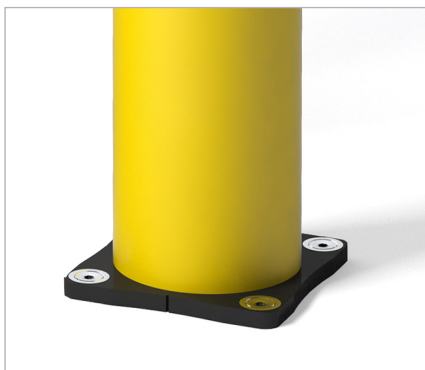


BO LIGHT BOPLAN BOLLARD LIGHT SPECIFICATION SHEET




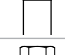


Revision: 10 August 2021 4:04 PM
Boplan reference: B0125

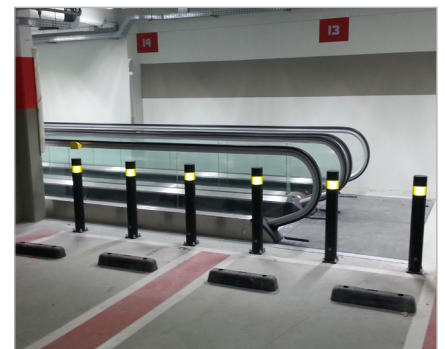


PRODUCT SPECIFICATIONS

APPLICATION		
Environment	The BO Light is the lightest in the series of impact-resistant bollards in Boplan's FLEX IMPACT® series. The BO Light is often selected to protect gates, access ways, corners, building façades, loading platforms and machines from collisions involving minor impact risk. Countersunk fixations avoid passing goods and vehicles get damaged.	
Impact performance at 90° (in JOULE)	POST: 500 Joule (Eq. to 1,0 ton - 3,6 km/h)	
MATERIAL		
Tube	Polyolefin - UV resistant - Fire class E ⁺ - Non conductive - Impervious to most chemicals**	
Cap	SEBS rubber	
COLORS		
	Standard: Yellow Also available in black Also available with stripes	
BASEPLATES		
	Zinc Coated Steel Countersunk	Stainless steel Countersunk
Material	Steel 37	SS 304
Coating	Lacquered + electro plating	No lacquer / No coating
Color	Matt black	Natural color

*Classification according to EN 13501-1:2007 +A1:2009 - Fire classification of construction products and building elements.
**Ask your local sales office for resistance to specific chemicals.

FIXATIONS			
		ZC (Zinc coated)	SS (Stainless steel)
STANDARD	Wedge anchor	 Not available	Not available
	Wedge anchor Countersunk	 Ø12mm (M8) x 85mm	Ø12mm (M8) x 85mm
ALTERNATIVES	Anchor rod (Chemical)	 Not available	Not available
	Concrete screw	 Not available	Not available
	Asphalt anchor	 Not available	Not available
	Spit anchor	 Not available	Not available



FEATURES AND FUNCTIONALITY

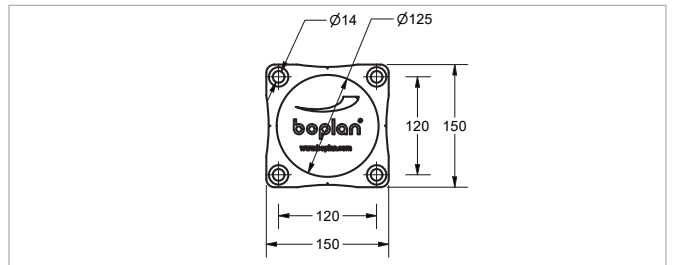
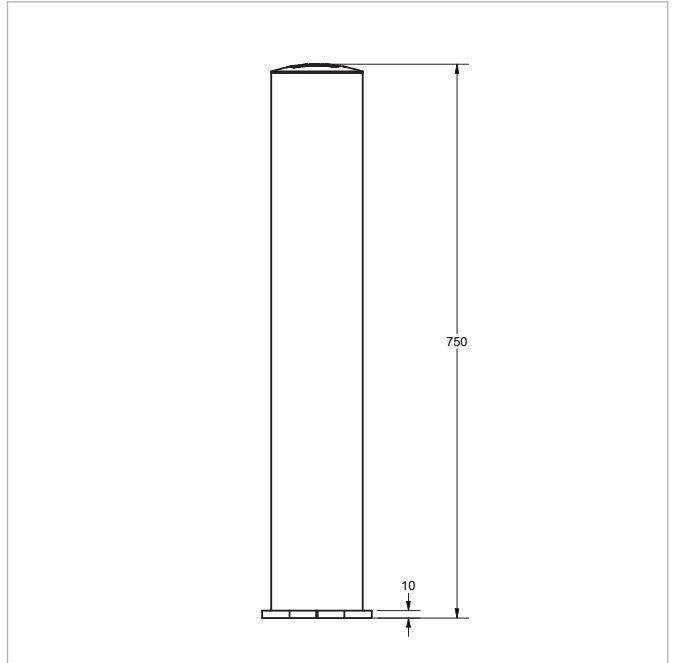
SIZE	
Height	300 mm 750 mm 1000 mm 250 mm - 1000 mm
Profile section	Ø125 mm (10 mm thick)
Baseplate	150 mm x 150 mm (10 mm thick)

REQUIREMENTS	
Concrete quality	minimum C25/30
Concrete floor plate thickness (mm)	minimum 150 mm
Concrete slab dimension around posts (mm)	400 (h) x 400 (w) x 300 (d)
Operational temperature	-10°C up to +40°C
Water and humidity	Zinc coated: Indoor and outdoor use in most environments. Stainless Steel: outdoor use or frequent exposure to water and humidity.

boplan READY FOR IMPACT

IMPACT LABEL FOR SAFETY BARRIERS

BOPLAN B0 LIGHT																									
IMPACT RATING	90° <small>PAS 13:2017 compliant</small>																								
<table border="0" style="width: 100%;"> <tr><td style="width: 15px;">E80</td><td style="width: 100px;">< 80 kJ</td></tr> <tr><td>E60</td><td>< 60 kJ</td></tr> <tr><td>E50</td><td>< 50 kJ</td></tr> <tr><td>E40</td><td>< 40 kJ</td></tr> <tr><td>E35</td><td>< 35 kJ</td></tr> <tr><td>E30</td><td>< 30 kJ</td></tr> <tr><td>E25</td><td>< 25 kJ</td></tr> <tr><td>E20</td><td>< 20 kJ</td></tr> <tr><td>E15</td><td>< 15 kJ</td></tr> <tr><td>E10</td><td>< 10 kJ</td></tr> <tr><td>E5</td><td>< 5,0 kJ</td></tr> <tr><td>E2</td><td>< 2,5 kJ</td></tr> </table>	E80	< 80 kJ	E60	< 60 kJ	E50	< 50 kJ	E40	< 40 kJ	E35	< 35 kJ	E30	< 30 kJ	E25	< 25 kJ	E20	< 20 kJ	E15	< 15 kJ	E10	< 10 kJ	E5	< 5,0 kJ	E2	< 2,5 kJ	0,5 kJ
E80	< 80 kJ																								
E60	< 60 kJ																								
E50	< 50 kJ																								
E40	< 40 kJ																								
E35	< 35 kJ																								
E30	< 30 kJ																								
E25	< 25 kJ																								
E20	< 20 kJ																								
E15	< 15 kJ																								
E10	< 10 kJ																								
E5	< 5,0 kJ																								
E2	< 2,5 kJ																								
TEST CONDITIONS <small>TEMPERATURE: 20°C IMPACT HEIGHT: 300 mm IMPACT ANGLE: 90° TEST FLOOR: CONCRETE C25/30 - 160 mm MANUFACTURER ANCHOR PULL OUT: 4,8 kN</small>	TEST VEHICLE <small>WEIGHT: 2300 KG TYPE: COMMERCIAL FORK LIFT SIZE (L x W x h): 1890 x 1020 x 1970 mm CONTACT AREA- STEEL BUMPER WIDTH: 600 mm</small>																								
BOPLAN TEST LAB <small>Muizelstraat 12 8560 Moorsele Belgium</small>																									
SUCCESS CRITERIA VEHICLE STOPPED - ASI (ACCELERATION SEVERITY INDEX) < 0.5																									



REFERENCE LIST - BOLLARD LIGHT				
	ZINC COATED (ZC) Countersunk		STAINLESS STEEL (SS) Countersunk	
	YELLOW	MULTICOLOR	YELLOW	MULTICOLOR
	300 mm	BO1250-0300-0001YEZ	BO1250-0300-0001MCZ	BO1250-0300-0001YES
750 mm	BO1250-0750-0001YEZ	BO1250-0750-0001MCZ	BO1250-0750-0001YES	BO1250-0750-0001MCS
1000 mm	BO1250-1000-0001YEZ	BO1250-1000-0001MCZ	BO1250-1000-0001YES	BO1250-1000-0001MCS
250 - 1000 mm	BO1251-1000-0001YEZ	BO1251-1000-0001MCZ	BO1251-1000-0001YES	BO1251-1000-0001MCS

STRIPES (BO not included)			
	Black	White	Yellow
1 STRIPE	PA0300-0125-0001BL	PA0300-0125-0001WH	PA0300-0125-0001YE
			